



# Northleaze

## C of E Primary School

# Prospectus

2025-26

# Welcome

Corinne Clarke  
Headteacher



We are proud to be entering an exciting new phase in our school's journey – one that reflects our commitment to excellence, innovation, and the wellbeing of every child. At the heart of this development is the enhancement of our Early Years Foundation Stage (EYFS) classroom and outdoor learning environment, designed to spark curiosity, nurture creativity, and support joyful exploration from the very beginning of a child's school experience.

But our vision extends far beyond EYFS. Across all year groups, Northleaze offers a rich, inclusive, and ambitious curriculum that inspires children to achieve their best, think deeply, and grow with confidence. Our dedicated staff, strong community values, and focus on personal development ensure that every child is known, valued, and supported throughout their learning journey.

Surrounded by rolling countryside and steeped in heritage, our school provides a unique and inspiring environment for learning and exploration – where children feel grounded in nature and excited by the possibilities of the future.

We invite you to be part of this journey and discover the warmth, energy, and vision that define our school.

At Northleaze, every child is encouraged to Shine - to be their best, reach their potential and to feel proud of who they are.



# Welcome

Dan Charvill  
Chair of Governors



It is with great pleasure that I welcome you to Northleaze Primary School. We are immensely proud of Northleaze and the wonderful community spirit, based on our Christian vision for every member of the community, of “Let your light shine”.

This is a safe, happy and inclusive school, where each child’s learning, character and spirit can thrive and the children can experience, not only what they need to learn to meet the demands of the curriculum, but also, in being equipped for life.

We hope you will feel very welcomed at Northleaze and empowered to let your own light shine too.



We live in a rapidly changing world. As our children progress through school, we want them to develop as compassionate individuals, full of friendship and creativity, respecting themselves and those around them, equipped with the resilience they need for all the challenges of life and with an understanding of the responsibility they each have for themselves and for the sustainability of the world in which they live.

# School Context

We moved in to an imaginatively designed new building in 2006. The entire length of the school at the back boasts a covered decking, which is used for wet playtimes and shade in the summer. We have eight classrooms, a large hall, which is used for serving lunches, a music room, a library, three group rooms, an ICT suite with 30 computers and a large staffroom. We have one Foundation Stage class, two Key Stage 1 classes and four Key Stage 2 classes which are all single year groups.



We have a clear focus on developing the ‘whole child’. There are opportunities for children to develop their talents across the curriculum. We offer a wide range of sporting, cultural and musical activities and continue to actively encourage the spiritual, moral, social and cultural development of all pupils as well as a healthy lifestyle.

The school actively strives to maintain a partnership with parents and parental expectations are high; we welcome their help and involvement and consult parents frequently. The school has active and supportive governors who work closely with the Headteacher.

# School Context



210 Pupil  
Capacity from  
Reception to  
Year 6

Church of  
England School  
linked with All  
Saints Church in  
Long Ashton

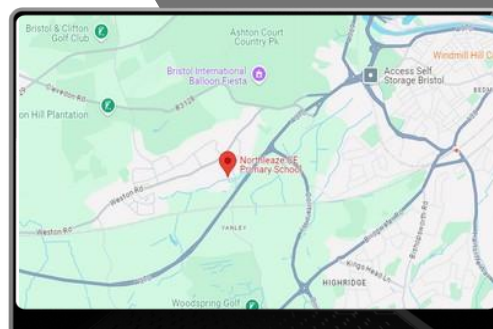
Part of a  
multi-  
academy trust



LIGHTHOUSE  
SCHOOLS PARTNERSHIP

Accept  
children from  
3 years old in  
our nursery

Located in the  
village of Long  
Ashton. Ten  
minutes from city  
centre



# Our School Values

## 1 RESPONSIBILITY

At Northleaze, we encourage children to take responsibility for their words and actions, and to treat others as they would want to be treated. It is our responsibility to make choices that allow us to be the best versions of ourselves that we can be.



## 2 CREATIVITY

Using our imagination to come up with ideas or make something new is one of the most valuable qualities human beings can have. Innovative thinking will serve our children well in whatever endeavours they choose. The more we encourage creative activity during their formative years, the more comfortable and confident they'll feel in sharing their ideas with others.



## 3 RESPECT

We teach children to show respect to others in a way that shows you care about their feelings and well-being. Showing respect for others include things like not calling people mean names, treating people with courtesy, caring enough about yourself that you don't do things you know can hurt you.



## 4 COMPASSION

There's a lot of overlap between compassion and kindness but, if someone is compassionate, they are more than simple kind. Compassion is defined as 'having a strong feeling of sympathy and concern for the suffering and misfortunes of others and a wish to help them.'



## 5 RESILIENCE

To nurture the skills of resilience is key to providing young people with the ability to cope with stress, adversity, failure and challenges. Resilience is evident when young people have a greater ability to "bounce back" when faced with difficulties.



## 6 FRIENDSHIP

Friendship is an important element in a fulfilled, contented life, and those who have close friends, whether one or two or many, will usually be happy and well-adjusted. Friends are especially important during times of crisis, uncertainty and change. If you find yourself going through a hard time, having a friend to offer encouragement and support can help make it easier. At Northleaze, we encourage having a close friend you can rely on who can help to boost your self-esteem.



# Our School Outcomes



At Northleaze, we have high expectations for all our children. We passionately believe all children have the right to achieve their full potential.

Whilst children will have strengths in different areas, achieving the age related expectations in the core subjects will undoubtedly set them up with the fundamental skills to choose their own path when they are older.

2024/2025 Results	School Result	National Average
Phonics Screening Check (PSC) % of pupils passing in Year 1	89%	81%
Early Years Foundation Stage % of pupils achieving a Good Level of Development (GLD)	78%	68%
Y4 Multiplication Tables Check (MTC) % of pupils achieving 25/25	44%	38%

## KS2 Outcomes

Key Stage 2 Result 2024/2025	Reading	Writing	Grammar Punctuation and Spelling	Maths	Combined (Reading, Writing and Maths)
% of pupils achieving at least the expected standard at Northleaze	88%	72%	84%	90%	68%
(National Average)	(75%)	(72%)	(73%)	(74%)	(62%)
% of pupils achieving at the higher standard (depth) at Northleaze	64%	24%	44%	52%	20%
(National Average)	(33%)	(13%)	(30%)	(26%)	(8%)



# OFSTED and SIAMS

The outcome of our recent Ofsted inspection (May 2022) is that Northleaze Church of England School continues to be a good school. The report notes that, 'Pupils enjoy school and work hard in lessons. Pupils and staff build positive relationships with each other and, over time, pupils gain a strong sense of belonging. They welcome the 'family feel' of the school.'



[Click here to view our latest OFSTED report](#)



**THE CHURCH  
OF ENGLAND**

In our last SIAMS inspection (September 2017) the school was awarded 'outstanding' with the report noting that, 'Christian values clearly drive the school and create an environment that promotes high quality learning. Relationships based on Christian values are evident and result in pupils' behaviour which is of the highest standard.'

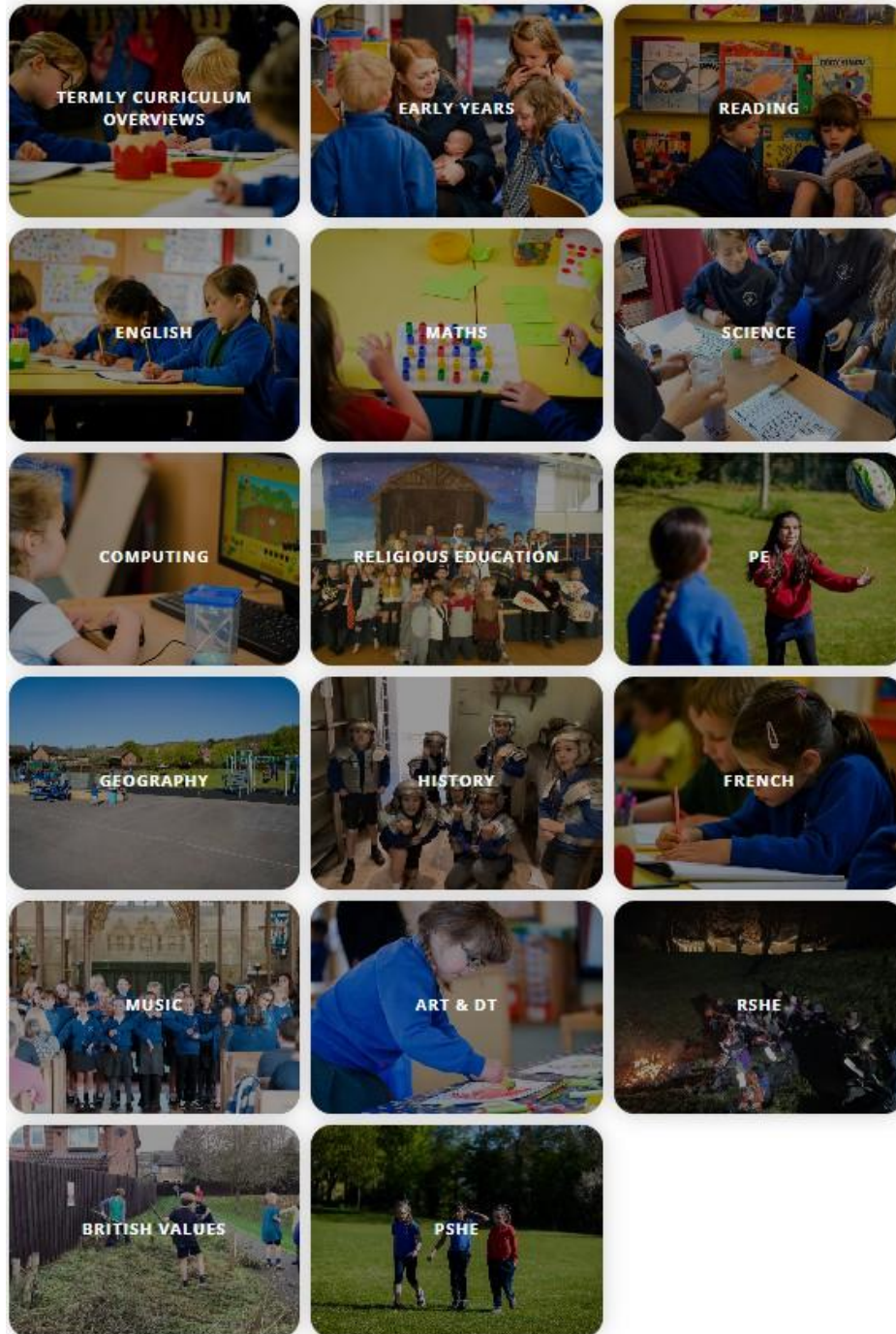
[Click here to view  
our latest SIAMS  
report](#)

# Our Curriculum

Northleaze C of E School offers a nurturing Christian community with a rich and inspiring curriculum designed to spark curiosity and a love of learning. We pride ourselves on planning stimulating and memorable visits which build pupils' cultural capital, alongside carefully planned sequences of lessons that inspire our pupils and prepare them for their future as responsible citizens, whichever path they choose to take.



**NORTHLEAZE**  
C of E Primary School



The curriculum has our core values at its centre. We aim for our pupils to leave Northleaze as creative individuals who are resilient to setbacks and have an understanding of the importance of respect for ourselves and all others. We want them to be able to take and relish responsibility, show friendship and demonstrate compassion to everyone, regardless of difference.

Through a range of exceptional learning opportunities, we challenge and encourage our pupils to fulfil their potential and to be all that they can be.

# Nursery

We are very excited to now be offering Nursery provision for 3 and 4 year olds here at Northleaze. Our Nursery can provide four days a week (8 sessions), Monday to Thursday from 8.50 - 3.15pm, with wrap around care available.

Children must be 3 years old to join our Nursery, so many children will be with us for one whole academic year before they start primary school. We do, however, consider applications for children to start our Nursery the term after they turn 3, for example, if your child turns 3 between September and December, they could join the Nursery the following January, if there is space.

We would love to meet you if you are interested in your child attending Northleaze Nursery. If you would like to visit, please email

[office@northleazeschool.co.uk](mailto:office@northleazeschool.co.uk)

Please include your child's name and tell us how many people will be attending (you are welcome to bring your child with you).



**At any point throughout the year, we will have a wide ranging offer of extra-curricular opportunities for children to get involved in**

<b>Choir</b>	<b>Football</b>	<b>Book Club</b>
<b>Fun Science</b>	<b>Netball</b>	<b>Bristol Sport</b>
<b>Times Tables Rockstars</b>	<b>Running</b>	<b>Art</b>

## Learning through Leadership

We believe all children should have the opportunity to be a leader. Throughout their time at Northleaze, every child will have the chance to show off their

leadership qualities and learn how to be even better leaders within the





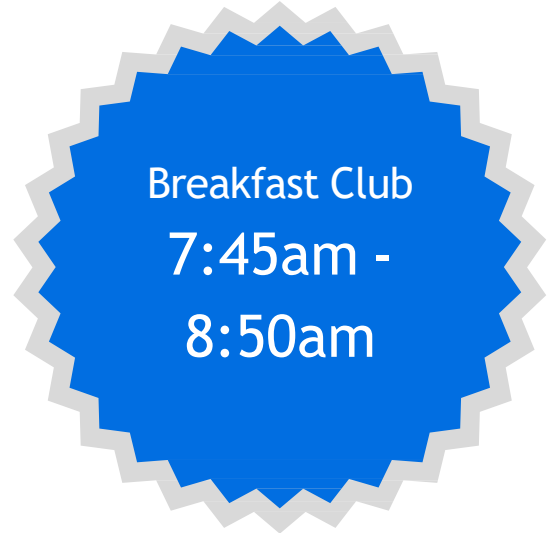
# Wraparound Care

## Northleaze Afterschool Play (NAP)

Our wraparound care is provided by NAP who provide outstanding and excellent care for children before and after school.



Open 5  
days a  
week

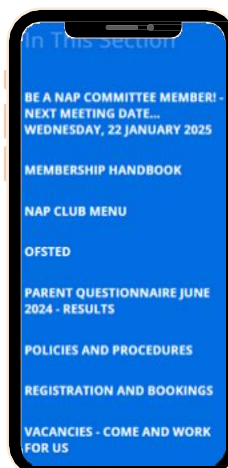


Breakfast Club  
7:45am -  
8:50am

For more information on our wraparound care, please see our school website below OR more information can be found in NAP's Parent Membership Handbook.



Afterschool  
3:25pm -  
6:00pm



# Joining us in Reception



Starting school can be a daunting process for many children and the transition to school is incredibly important. Creating a smooth and nurturing environment to create positive first impressions for children is vital.

At Northleaze, our transition offer for children joining us in Reception is carefully thought out and planned to cater for each individual child joining us.

## Nursery Visits

For any child not attending nursery at Northleaze, our EYFS leader will visit your child's nursery in the Summer Term.

## Settling in Sessions

All children will have the opportunity to come into school on more than one occasion. This is often done in smaller groups rather than the whole class so it is more personal and adapted for each child.

## Parent Information Evening

During the Summer Term, new parents will be invited in for an information evening, more detailed tour of EYFS and have a chance to find out any further details about Reception.

## September

Upon starting, all children in Reception will be gradually exposed to the wider school so they are not overwhelmed. Subtle differences in playtime, lunchtimes and assemblies all help children to become familiar with their learning environment.

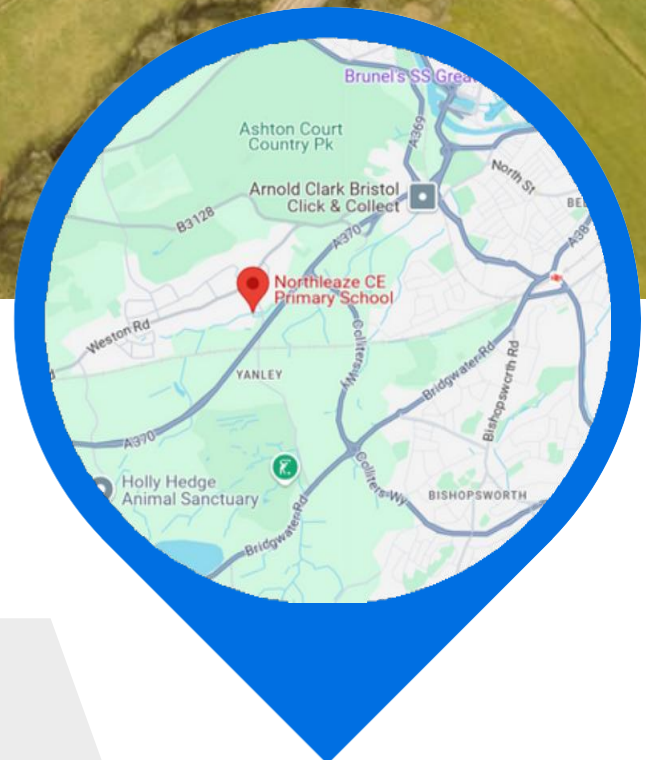
## Year 6 Buddies

Your child will be paired up with a Year 6 buddy who will give them support throughout the whole year - mainly during free play but also in deliberately planned learning opportunities.



# Our Location

Northleaze C of E Primary School is located in the village of Long Ashton - just south west of Bristol. It is a charming village that is surrounded by countryside and rural land but with extremely good connections to the city centre. Long Ashton continues to grow into a highly sought after area with a population of over 6000 and is home to friendly community.



Our school site is situated alongside the Bristol cycle path and the links to other local areas, including Bristol City Centre, are excellent



We are within walking distance of the Long Ashton David Lloyd Leisure Centre and the Ashton Court Estate is very close by as well.

# Our Multi-Academy Trust



## Lighthouse Schools Partnership



The Lighthouse Schools Partnership (LSP) was founded in 2016. Working together in partnership is an opportunity that we relish. We believe that by working together we can deliver more fully the aims to which we were committed as individual schools. Central to this is a desire to invest in the training and excellence of our staff.

If you would like to find out more about the partnership or have an enquiry about joining, please contact Gary Lewis our Chief Executive.

[Click  
here for  
the LSP  
website](#)