



# NORTHLEAZE

C of E Primary School

## WEEKLY NEWSLETTER

T3 Week 3: Friday 24th January 2025

### WELCOME

Another week has raced by! Over the past two weeks, teachers have been meeting up with respective teachers from similar year groups across the Lighthouse Schools Partnership. This is to share examples of writing from other schools in the area and pick up useful strategies for supporting writing that can be brought back to classrooms here at Northleaze. It is a key component of upskilling our teachers' experience and knowledge that will improve the quality of teaching for your child.

I am also delighted to announce that we are investing some money into becoming an OPAL school. OPAL stands for Outdoor Play and Learning and it is a transformational provision that we will be providing children at lunchtimes. At the core, OPAL focuses on play and giving children opportunities to play to develop strong, positive relationships with their peers and socially interact with others to form lasting friendships. More info will be shared soon but here is the link to OPAL if you wish to know more!

Have a great weekend.

Mr Thompson



## WEEKLY REMINDERS

Click on the circles to head to the webpage for further information

### UNIFORM



### ASPENS



## CHRISTIAN VALUE: RESPECT

The term respect is used a lot, but what does it actually mean? It is a big concept to grasp. Some would say that respect is an attitude. A definition of respect includes

- 1) How you feel about someone and
- 2) How you treat them.

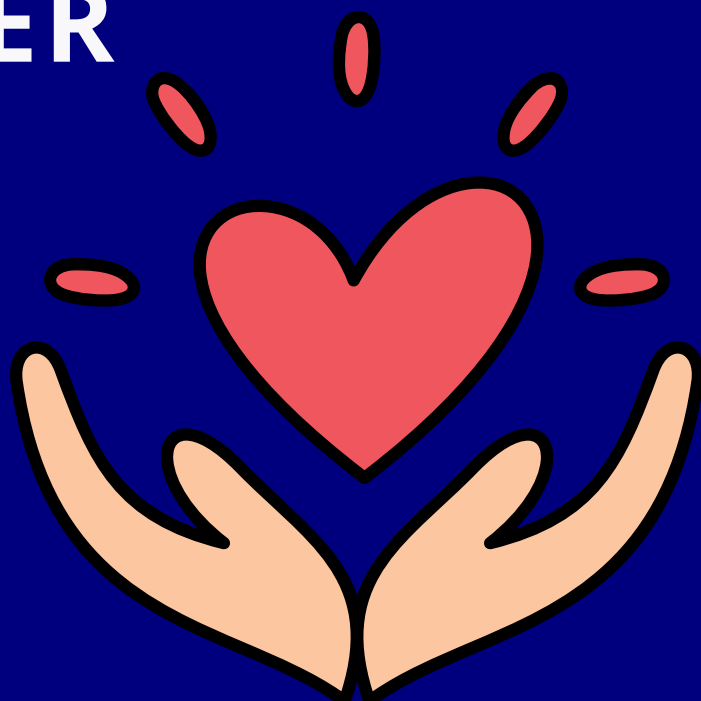
Respect is how you feel about someone. Having respect for someone means you think good things about who a person is or how he/she acts. You can have respect for others, and you can have respect for yourself. Respect is how you treat someone- Showing respect to someone means you act in a way that shows you care about their feelings and well-being. Showing respect for others include things like not calling people mean names, treating people with courtesy, caring enough about yourself that you don't do things you know can hurt you. You could say, respect is thinking and acting in a positive way about yourself or others. Respect is thinking and acting in a way that shows others you care about their feelings and their well-being.

# WEEKLY PRAYER

Dear God,  
We ask for your help,  
To learn and understand,  
The value of respect,  
And to lend a helping hand.

Teach us to be kind,  
And treat others with love,  
To see the good in everyone,  
And to forgive and rise above.

May we use our words,  
To build each other up,  
And never to hurt,  
But to share, and care, and love.  
Amen



## KEY DATES

Friday 31st January  
**Parent Workshop: Nurture and Wellbeing**  
9:45am - 10:30am

Friday 7th February  
**PSA Quiz night**  
7.15pm, see poster below for details

Friday 14th February  
**INSET Day**  
No children in school

Monday 17th - Friday 21st February  
**Half Term Holiday**  
No children in school

Friday 28th February  
**PSA Textile Collection**  
Please bring in any donations on the day

## PARENT WORKSHOP

**Nurture and wellbeing workshop:**  
Friday 31st January  
@ 9:45am

### Nurture and Wellbeing Workshop

At the workshop on Friday 31st January, we will be focusing mainly on the importance of wellbeing for children. This is one of the six principles of Nurture.

We will discuss strategies that can be used at home, how wellbeing can impact learning and how we as adults can support children with their wellbeing.

In preparation for the workshop on Friday, if you would like to pose any questions or topics around wellbeing that you would find useful to be part of the morning, please drop an email to the school office.



There will be chance to chat and discuss wellbeing with other parents over teas and coffees.



## CELEBRATION ASSEMBLY

Well done to everyone who got class awards!  
Reception: Rosie, Jude and Charlie  
Year 1: Livia, Jaxon and Otis  
Year 2: Robyn, Archie and Theo  
Year 3: William, Juliette and Harry  
Year 4: Alex, Freya and Olivia C  
Year 5: Aysa, Sid and Alice  
Year 6: Jack, Evelyn, Franklin & Charlie



# WELL DONE

## KS2 RESULTS

We are absolutely delighted to share our amazing results from last year which have now been validated by the DfE.

This is not a result that is solely down to the Year 6 team (although they are amazing!) but a culmination of many years of hard work by everyone - adults and children!

A huge well done!



# 88%

88% of children in Year 6 achieved at least expected attainment in reading, writing and maths combined!

# 3%

That achievement places us in the top 3% of schools in England!

# 1st

88% for reading, writing and maths combined makes us the top school in North Somerset!

## MARKETING EXPERIENCE

If there are any parents who work in marketing or have experience in marketing and would like to help the school, please could you get in touch by contacting the school office?

We are looking to share our amazing school with wider audiences across Bristol!

## WALKING TO SCHOOL

There have been numerous children arriving into school covered in mud. It is a result of Year 5 and Year 6 children taking the shortcut through the trees and sliding down the hill.

The Year 5 and 6 classes have been asked not to use this route on the way to school but any reminders at home would be greatly appreciated!

## INSET DAYS 2025-26

The INSET days have now been confirmed for 2025-26 and these are now updated on our website.

Tuesday 2nd September 2025  
Wednesday 3rd September 2025  
Monday 3rd November 2025  
Friday 16th January 2026  
Friday 13th February 2026  
Monday 1st June 2026



## RUNNING CLUB

Running club resumed this week. Well done to all those that came. As a reminder, children can come to school in their PE kit ready for running club at lunch.

[Please sign up here!](#)



Today, we ran...

# 1.5 KM

In total this year...

# 26.42 KM

# 24

Children ran this week!



Happy birthday to all the children who celebrated their birthday this week.

Finlay (Rec), Ezra and Josh (Year 2), Mo and Jack (Year 3) and Issy in Year 5

Hope you all had a great day!

## TROUSERS/LEGGINGS

Last week it was tights and socks, this week a shout out for a few pairs of dark coloured leggings and jogging trousers (good quality) that you may be able to donate. This week we have seen lots of children getting muddy and wet and needing to change. This will help avoid as many phone calls home for spare clothes.

## A-TISSUE!

We also seem to be handing out a lot of boxes of tissues for sniffles across the school at this time of year. We do have a supply of tissues in school but any donations of small boxes for classrooms would be appreciated!

# COMMUNITY

**HENGROVE PARK LEISURE CENTRE**

## LEARN TO SWIM

**It's never too early to start**

**For all ages**  
A 25 minute lesson per week

**Free swimming during public times**

**Additional syllabus included Swim Safer, Smarter, Stronger**

**Monthly direct debit**

**LeisureCentre.com**

**BRISTOL CITY COUNCIL**  
**LEXLEISURE**  
Lex Leisure working in partnership with Bristol City Council

Following the **Swim England** Learn to Swim Programme

**Water Safety Partner of RLS UK**  
OFFICIAL PARTNERSHIP

Scan here for further info

We have had information about swimming lessons at Hengrove Park, where we take our children for curriculum lessons. The swim co-ordinator says

"We would love to boost School Swimming achievements by encouraging more children to join our evening/weekend lessons here at Hengrove Park Leisure Centre! The swim lessons work in tandem with School Swimming covering the water confidence, swim skills, water safety and distances required for the National Curriculum targets we need to meet."

More details can be found by scanning the QR opposite.

# PSA - QUIZ NIGHT

**Friday 7th February**  
**Northleaze PSA quiz**

**BAR OPENS 19.15**

**QUIZ STARTS 19.45**

# QUIZ NIGHT

Quiz tickets £5 per person  
Quiz ticket + cheese board £10 per person  
1 quiz entry + bottle of wine/fizz only £15  
1 quiz entry + bottle of wine/fizz + cheeseboard £20

Max team size: 6 people

Beer, soft drinks, G&T and some wine / prosecco will be available to purchase on the night. Please pre-order bottles of wine and cheese to help minimise our waste and avoid disappointment!

Purchase your tickets at  
[pta-events.co.uk/northleazeprimaryschoolpsa](http://pta-events.co.uk/northleazeprimaryschoolpsa)  
Please remember to click your preferred bottle choice: red / white / rose / fizz