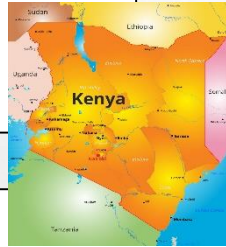


## Our Christian value this term is 'resilience'.

### As scientists:

We are learning about plants and how seeds and bulbs are different. We will be investigating what a seed or bulb will grow into and what it needs in order to grow healthily.



### As geographers:

We will be looking at geographical differences between the UK and Kenya. We will locate both on a world map and then explore the different human and physical features of both countries as well as weather and daily lives of children living there.

### As readers and writers:

We will explore a Literacy Shed video clip called 'Flight' and build our own narratives around the possibility of learning that we can fly!

We will be exploring the book 'The Dragon Machine' by Helen Ward. The children will use dragons as a focus to explore descriptive language and engage with the main character's thoughts and emotions through letter writing. They will work towards producing their own short dragon story

### As mathematicians:

We will be learning about:

**Statistics:** We will be interpreting and constructing simple pictograms, tally charts and block diagrams.

**Time:** We will be comparing and sequencing intervals of time. We will tell and write the time to five minutes, including quarter past/to the hour.

**Revision:** We will revisit subtraction, multiplication and division.



# Year 2 Curriculum Overview Term 5



### As computer scientists:

We will be learning how to create media, specifically digital music.

### As athletes:

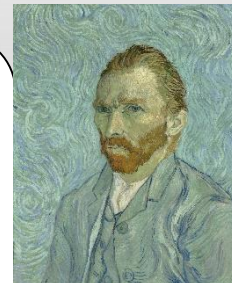
We will enjoy **tennis** on Wednesdays where we will learn to hold and use a racquet and hit and return the ball. We will work on our **basketball** skills on Tuesdays by dribbling, passing and scoring.

### RE

We will be learning about the rules that different religions follow and thinking about how we should live our lives.

### As artists:

We will be exploring portraits and what they are by experiencing Van Gogh, Matisse and Andy Warhol. We will be drawing self portraits and thinking about different medium.



### PSHE

Our focus in PSHE this term is relationships. We will be learning how to build strong and healthy relationships with the people around us.

### As musicians:

We will be exploring songs about friendship and learning our own song to perform. We will focus on pitch, beat and rhythm.